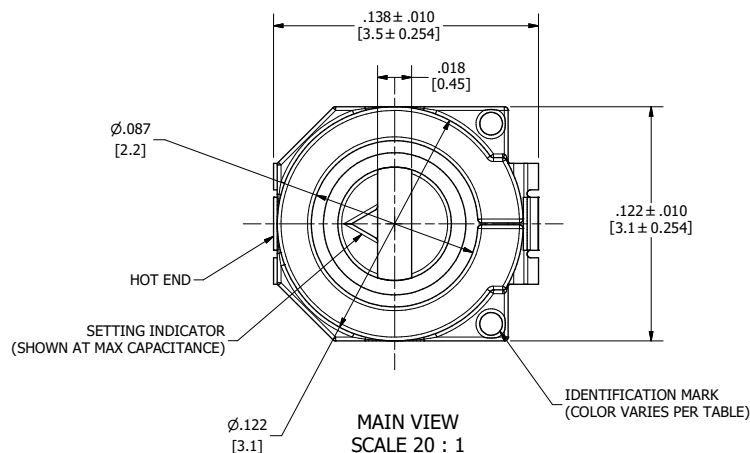


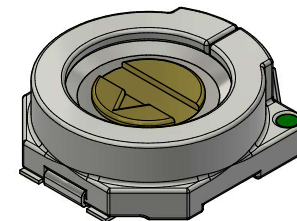
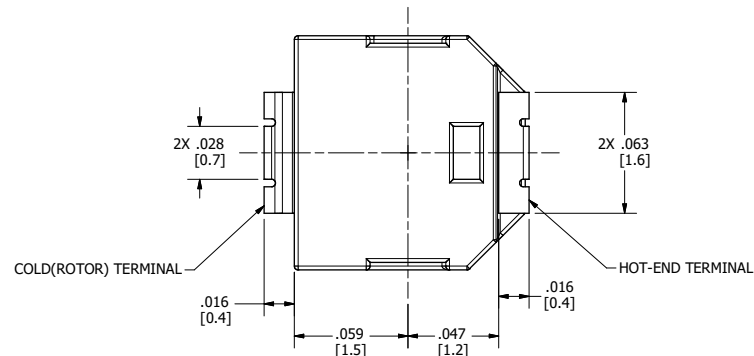
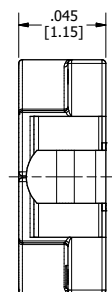
CONFIGURATION TABLE (SEE NOTE 6.1)						
PART NUMBER	C MIN [pF]	C MAX [pF]	TC [PPM/°C]	Q MIN. @ 1 MHz	MARKING COLOR	ALTERNATE COLOR
JR030	1.5	3.0 +50% / -0%	0 ± 200	500	BLACK	BLACK & GREEN
JR060	2.0	6.0 +50% / -0%	0 ± 300	500	BLUE	BLUE & GREEN
JR100	2.0	10.0 +100% / -0%	0 ± 300	500	WHITE	WHITE & GREEN
JR150	3.0	15.0 +100% / -0%	0 ± 500	500	PINK	PINK & GREEN
JR200	4.5	20.0 +100% / -0%	0 ± 500	500	RED	RED & GREEN
JR300	5.5	30.0 +100% / -0%	-1500 ± 1000	200	ORANGE	ORANGE & GREEN
JR400	8.0	40.0 +100% / -0%	-1500 ± 1000	200	YELLOW	GREEN OR YELLOW & GREEN
JR500	8.0	50.0 +100% / -0%	-1500 ± 1000	200	GREEN	GREEN & GREEN

#### NOTES:

- INTERPRET DRAWING PER ANSI Y14.5M-1994.
- [ALTERNATE DIMENSIONS]** ARE IN MILLIMETERS.
- ELECTRICAL SPECIFICATIONS:
  - CAPACITANCE RANGE: *SEE CONFIGURATION TABLE.*
  - DC WORKING VOLTAGE AT MAX. RATED CAPACITANCE: 125 [VOLTS].
  - DC WITHSTANDING VOLTAGE AT MAX RATED CAPACITANCE: 220 [VOLTS].
  - Q FACTOR AT 1 [MHz] AND MAX RATED CAPACITANCE: *SEE CONFIGURATION TABLE.*
  - INSULATION RESISTANCE: 10<sup>14</sup> [MEGAOHMS] AT 25°C.
  - TEMPERATURE COEFFICIENT: *SEE CONFIGURATION TABLE.*
  - SELF RESONANT FREQUENCY MEASURED AT MAX RATED CAPACITANCE
- MECHANICAL SPECIFICATIONS:
  - TUNING TORQUE: 0.14 [in·oz] TO 1.00 [in·oz].
  - ALL PARTS FURNISHED ON 12 [mm] TAPE AND REEL; 1000 PIECES PER REEL.
- ENVIRONMENTAL:
  - OPERATING TEMPERATURE: -40°C TO +85°C.
  - RoHS COMPLIANT.
- MISCELLANEOUS:
  - IN ORDER TO PROVIDE THE HIGHEST LEVELS OF SERVICE, KNOWLES RESERVES THE RIGHT TO SUPPLY EQUIVALENT PRODUCTS WHERE SPECIFICATIONS ARE EQUIVALENT OR ENHANCED. THIS INCLUDES SUBSTITUTION OF JR500 TO JR400 AND HV SUFFIX FOR STANDARDS PARTS.



SUGGESTED FOOTPRINT  
SOLDER PASTE THICKNESS OF 0.15 [mm] RECOMMENDED  
SCALE 20 : 1



ISO VIEW  
SCALE 20 : 1

REVISION HISTORY			
ECO#	ZONE	REV	DESCRIPTION
			INITIAL ACAD RELEASE
1607	ALL	A	SPECS MATCHED TO CURRENT SALES BROCHURES (NOTES 3.2 & 5.1)
	ALL	B	REMOVED JR080
			DRAWN VKJ02/10/94
			APPROVED DD
			ECJ05/15/17
			MIJ03/23/22

MATERIAL N/A		DRAWN E. CONTRERAS		5/15/2017	
FINISH N/A		CHECKED			
TOLERANCES .XX ± .XXX ± .008 .XXXX ± X° ± 1° X.X° ± 0.1°		SURFACE FINISH 32		QUALITY ASSURANCE	
3RD ANGLE PROJECTION		MANUFACTURING F.KHALIFEH		5/15/2017	
		ENGINEERING A.DIAB		5/15/2017	
		CUSTOMER PART NUMBER			
INVENTOR 2014 GENERATED DWG		PER VIEW		DWG NO. V-7586	
		SCALE C		CAGE CODE 55153	
		PART NUMBER JRxxx		REV B	



VOLTRONICS  
THE TRIMMER CAPACITOR COMPANY  
2777 ROUTE 20 EAST  
CAZENOVIA, NEW YORK 13035

## OUTLINE DRAWING FOR JRxxx SERIES

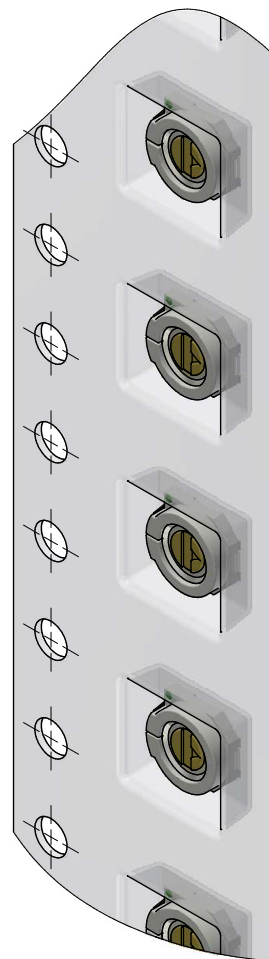
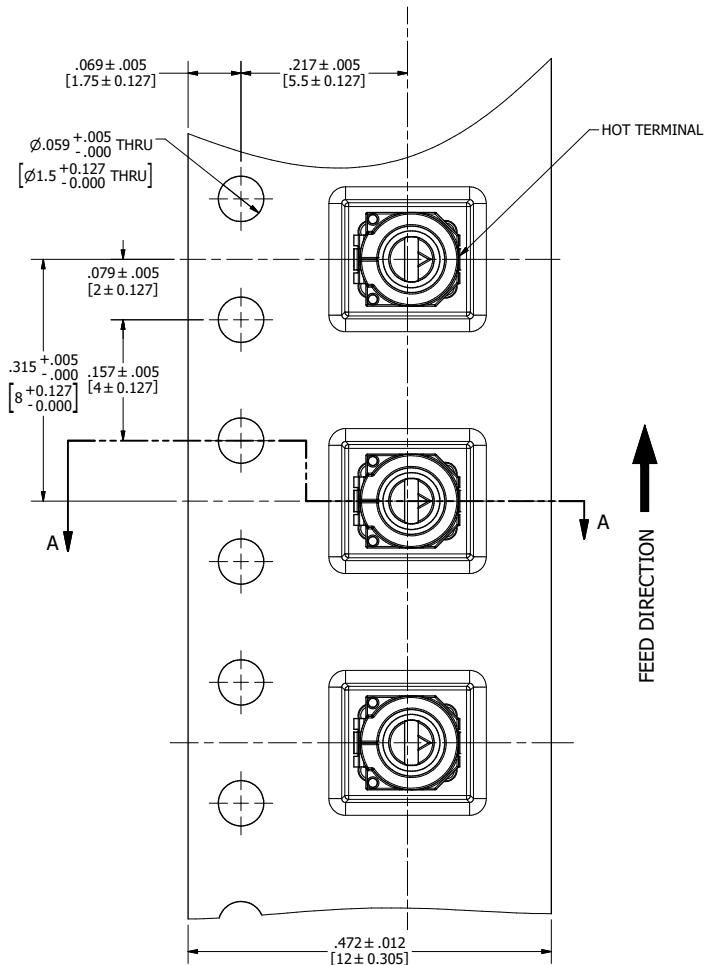
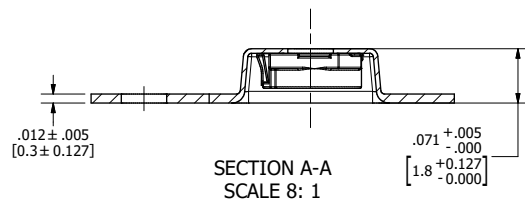
SIZE C	CAGE CODE 55153	PART NUMBER JRxxx	REV B
SCALE	PER VIEW	DWG NO. V-7586	SHEET 1 OF 2

4

3

2

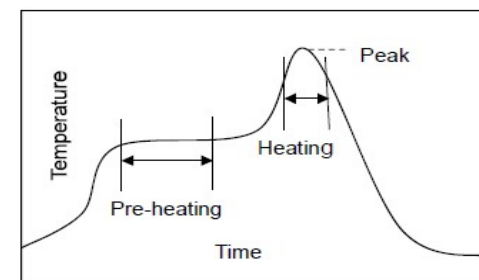
1



### HANDLING/STORAGE PRECAUTIONS:

- DO NOT USE FLOW SOLDERING.
- DO NOT APPLY SOLDER OR FLUX TO ANY PARTS BUT TERMINAL
- WHEN USING SOLDERING IRON, THE SOLDERING IRON SHOULD NOT COME IN CONTACT WITH THE HOUSING OF THE CAPACITOR.
- PLEASE REFER TO SOLDER RECOMMENDATIONS CHART.
- NO-CLEAN METHOD IS PREFERRED OVER SOLVENT WASHING. EXPERIMENT WITH SAMPLES BEFORE WASHING BY SOLVENTS.
- DO NOT APPLY LOCKING SPRAY OR PAINT TO TRIMMER.
- ELECTRIC SPECIFICATIONS MAY BE AFFECTED ADVERSELY.
- PRODUCT CONTAINS LUBRICATION OIL. LUBRICATION LEAKS WILL NOT AFFECT PRODUCT SOLDERABILITY.
- USE OF CERAMIC SCREWDRIVERS IS RECOMMENDED FOR TUNING.
- DO NOT APPLY AXIAL LOAD DURING TUNING IN EXCESS OF 0.3[lbf]/1.5[N].
- KEEP PARTS OUT OF DIRECT SUNLIGHT EXPOSURE. STORE PARTS IN DUST-FREE ENVIRONMENT.

### SOLDERING RECOMMENDATIONS



#### STANDARD LEAD-FREE SOLDERING PROFILE

STAGE	SAC305 SOLDER	EUTECTIC SOLDER
PRE-HEATING	TEMPERATURE: 150[°C] - 180[°C] TIME: 60 - 120 SECONDS	TEMPERATURE: 120[°C] - 150[°C] TIME: 60 - 120 SECONDS
HEATING	TEMPERATURE: 220[°C] MIN. TIME: 30 - 60 SECONDS	TEMPERATURE: 183[°C] MIN. TIME: 30 - 60 SECONDS
PEAK HEAT	TEMPERATURE: 265[°C] TIME: 3 SECONDS MAX	TEMPERATURE: 265[°C] TIME: 3 SECONDS MAX
REFLOW CYCLES	2 TIMES MAX	2 TIMES MAX
SOLDERING IRON		
SPEC	TEMPERATURE 400[°C] MAX TIME: 3 SECONDS MAX	



DLI • Novacap • Syfer • Voltronics

VOLTRONICS  
THE TRIMMER CAPACITOR COMPANY  
2250 NORTHWOOD DRIVE  
SALISBURY, MARYLAND 21801

SIZE	CAGE CODE	PART NUMBER	REV
C	55153	JRxxx	B
SCALE	PER VIEW	DWG NO.	V-7586
			SHEET 2 OF 2